



1. JUNCTION BOX

Organising Wire Junctions

Junction boxes ensures that the wires are well organised at cross-junctions. The flyovers installed within keeps wires neat and tidy.

Three Stars offers the following 2 sizes, (S & B), with flyovers in corresponding sizes. Customization is available to ensure that our products suits your needs.

Junction Box		Type S	Type B
Frame	Material	Die-Cast Aluminium	
	Dimensions (mm ²)	250 x 250	350 x 350
Box Base	Material	Pre-Galvanized Steel	
	Dimensions (mm ²)	315 x 315	400 x 400

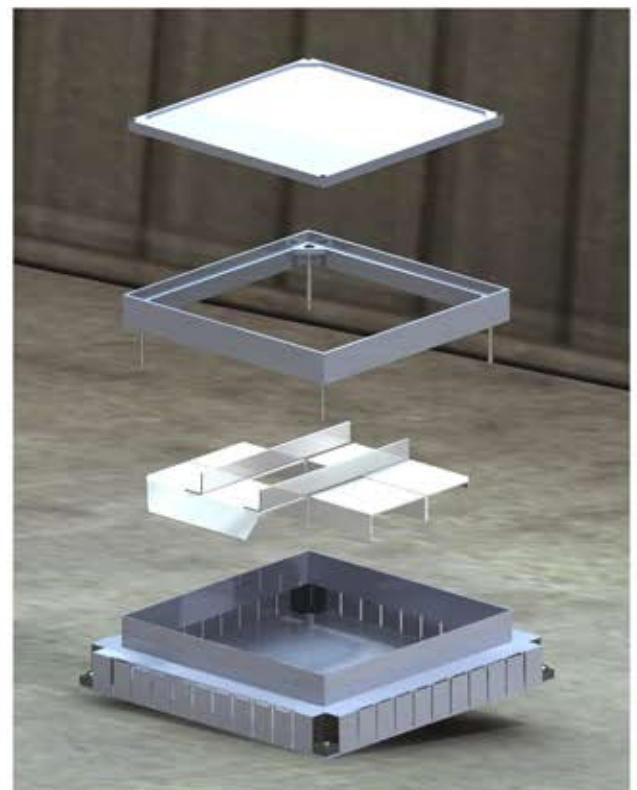
TYPE S



TYPE B



EXPLODED VIEW



FLYOVER

